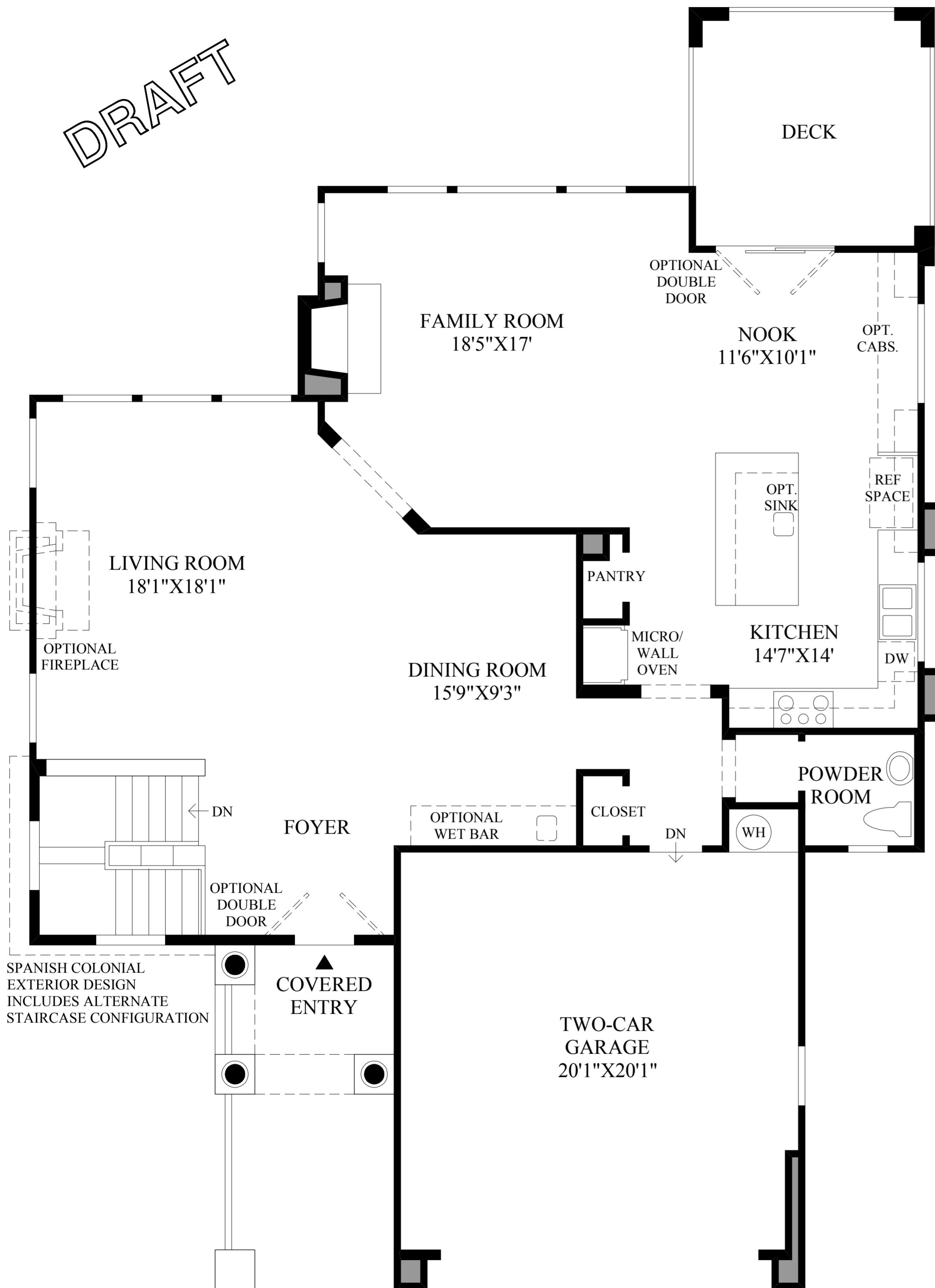
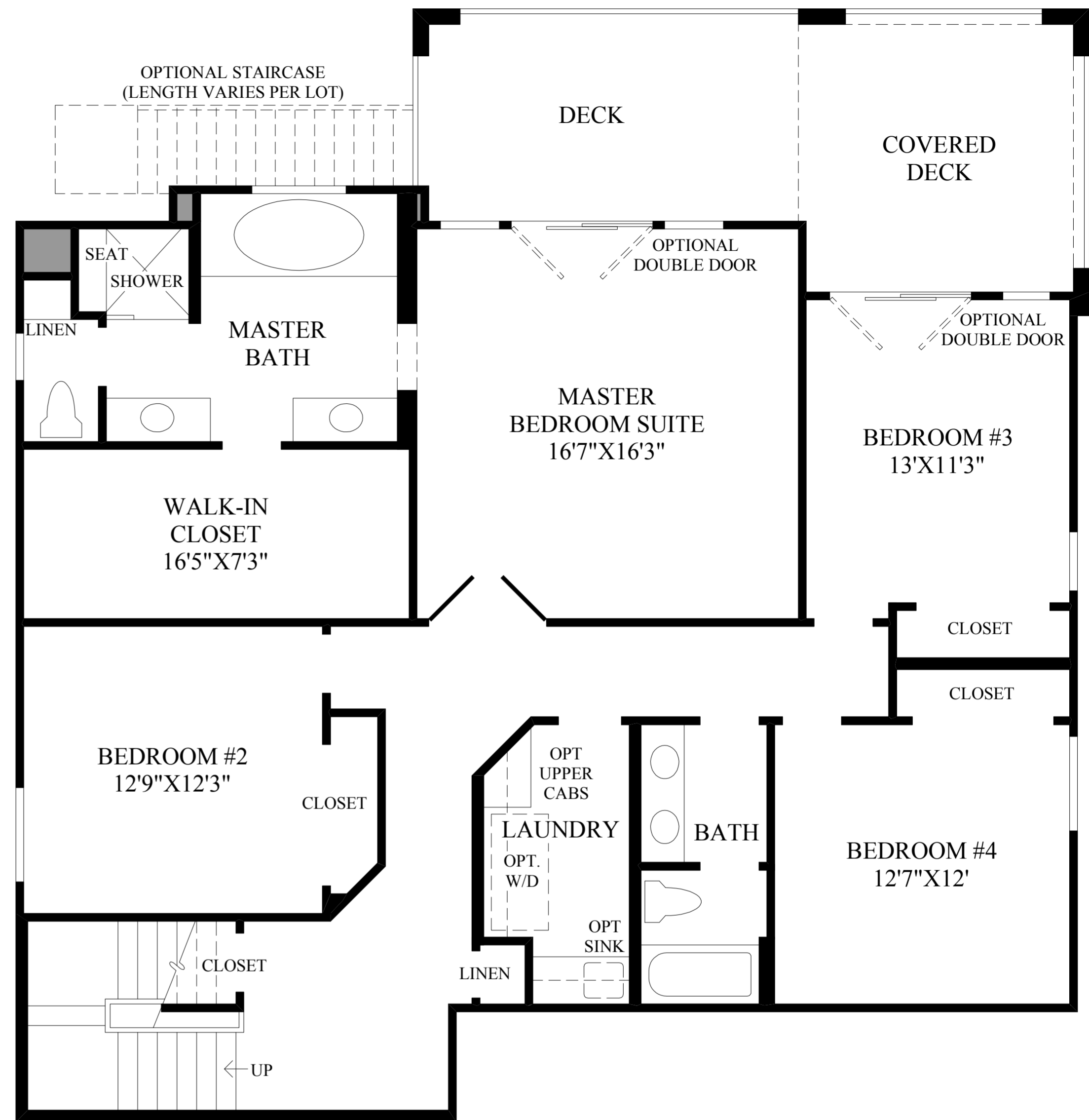


DRAFT



**Main Level**

TRADITIONAL EXTERIOR DESIGN SHOWN



**Lower Level**

DRAFT

**THE ASHGROVE HIGHLIGHTS**

- Off the covered entry with gorgeous columns is a stunning foyer which opens to a pleasing dining room and spacious living room.
- Beautiful family room features radiant array of windows and includes standard fireplace.
- Sunlit nook has access to outside deck and is adjacent to stylish kitchen with large center island.
- Stunning master bedroom with sensational master bath that boasts soaking tub, separate shower, dual vanities, and generous walk-in closet.
- Conveniently located laundry and desirable lower level deck also included.